

Why choose B&L's implant scaler tip?

Metallic ultrasonic tip designed for scaling of polished implant surfaces

Compatibility with electric piezo unit
Optimal scaling efficiency with minimal abrasiveness
to the external polished surface of the implant.

Ideal Periodontal Management of Implant

With B&L's IS Tip, plastic and titanium implant
currettes are now obsolete.

Ideal solution for complete removal of residual cement

* IS Tip is a disposable item.

What an ideal solution for peri-implantitis !!

Smart choice for implant scaling

IS Tip

Why choose B&L's implant scaler tip?

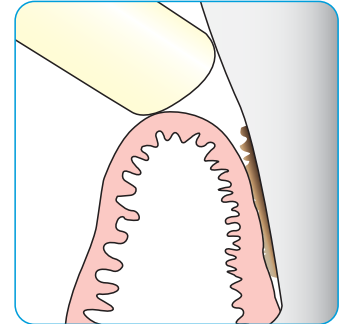
Accessibility

More easy to access the distal lingnal gingiva of molar.
Able to **bend** the tip point for hiding area.

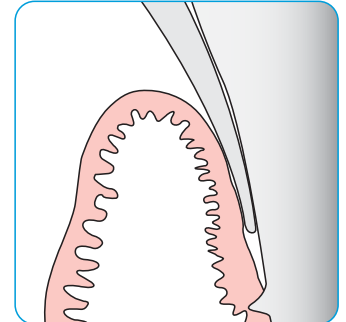


Sharpness

Avoide to excessive open gingival sulcus.

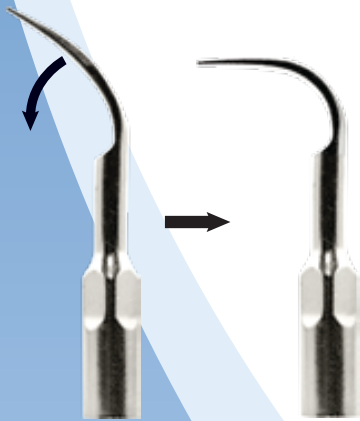


Other tip



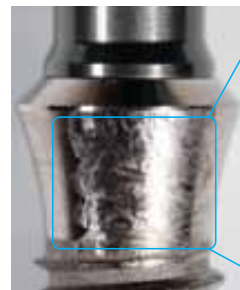
B&L IS Tip

Customization

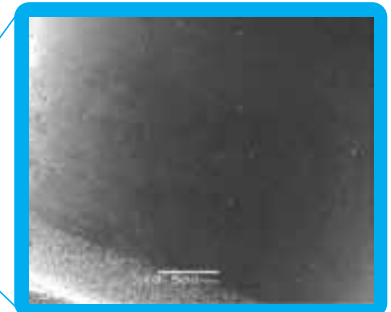


No Scratch

B&L Implant Scaler Tip vs. Others SEM Photo (x40,40 strokes)



Other tip



B&L IS Tip

B&L's Implant Scaler Tip: Indications and Advantages

- ① Ideal for periodontal maintenance of the implant.
- ② Ideal for treatment of the peri-implantitis.
- ③ Ideal for excess cement removal.
- ④ B&L's Implant Scaler Tip's unique material causes deformation on the tip, NOT on the porcelain or ceramic restoration surfaces.

* IS Tip is a disposable item.